



**PUBLIC WORKS DEPARTMENT**  
ENGINEERING DIVISION  
156 S. BROADWAY, SUITE 150  
TURLOCK, CA 95380

PHONE: (209) 668-5520  
FAX: (209) 668-5563  
TDD: (800) 735-2929  
engineering@turlock.ca.us

---

**Addendum No. 2**

**May 3, 2024**

**City Project No.: 23-032**  
**Roads Program Capital Improvement Project**

Plan holders:

This addendum includes revisions to Plans and Specifications and provides clarifications and answers to questions submitted to the City.

**Revisions to Plans and Specifications**

The following additions, deletions or modifications shall become part of the Contract Documents:

Strikethrough text (~~text~~) indicates deletions.

Bold Italicized text (***text***) indicates additions.

---

**Item No. 1:**

Q18: The Street Plan & Profile sheets call out to remove and relocate water meters under bid item 39. Can you please provide a typical detail for the water meter relocations and where each meter is supposed to be moved to?

A18: Existing water meters called out as "Remove and Relocate" on the plans shall be relocated to behind back of sidewalk per City Standard W-9. Delete sheet D4 and replace with attached sheet D4 of this addendum. City Standard Detail W-9 has been added to this sheet.

---

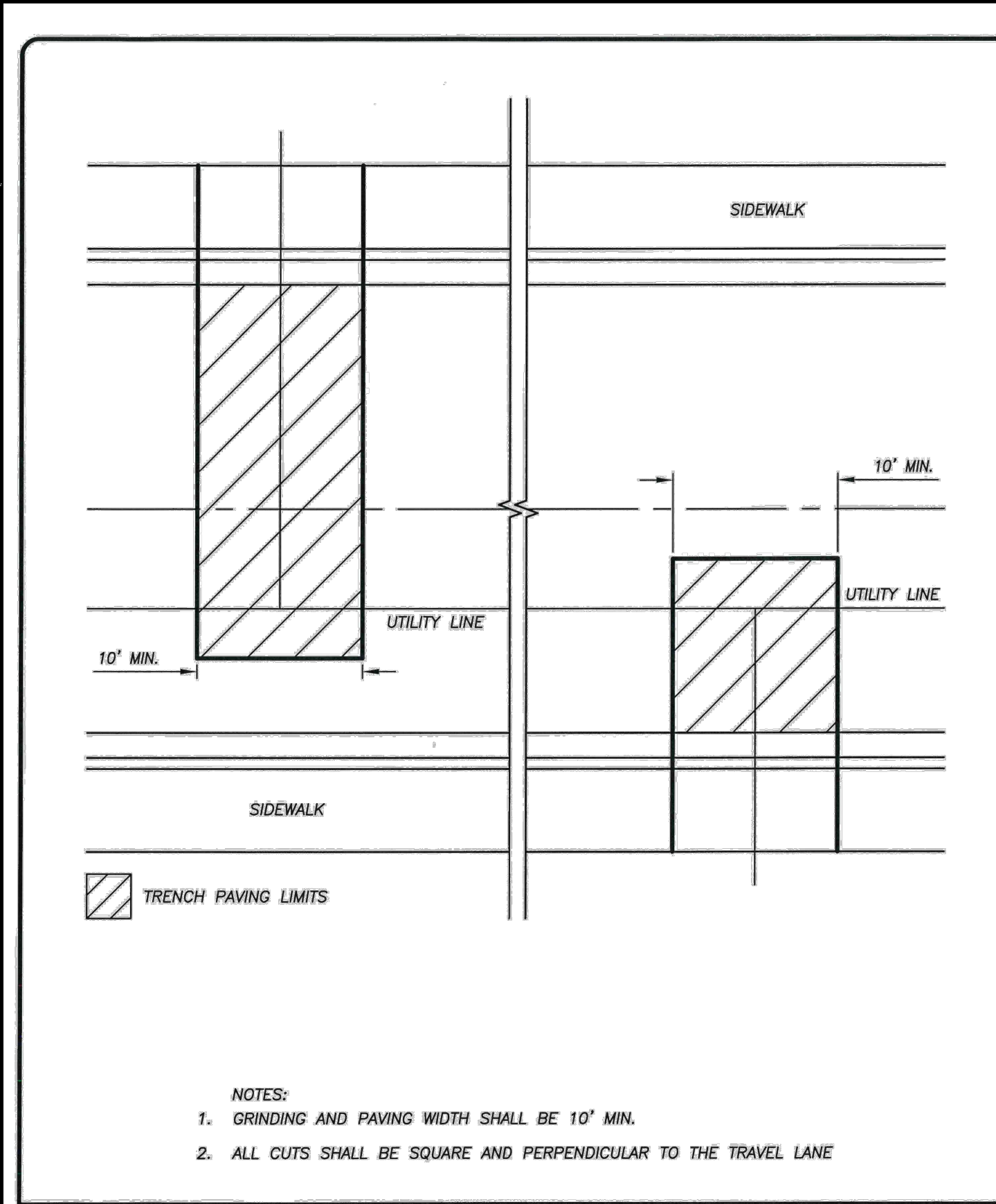
**Item No. 2:**

Q19: Detail 2 on page D6 shows the 12" FDR extending under the curb and gutter. Does this detail represent the intent of the city? If that is your intent, that would increase the duration of the project.

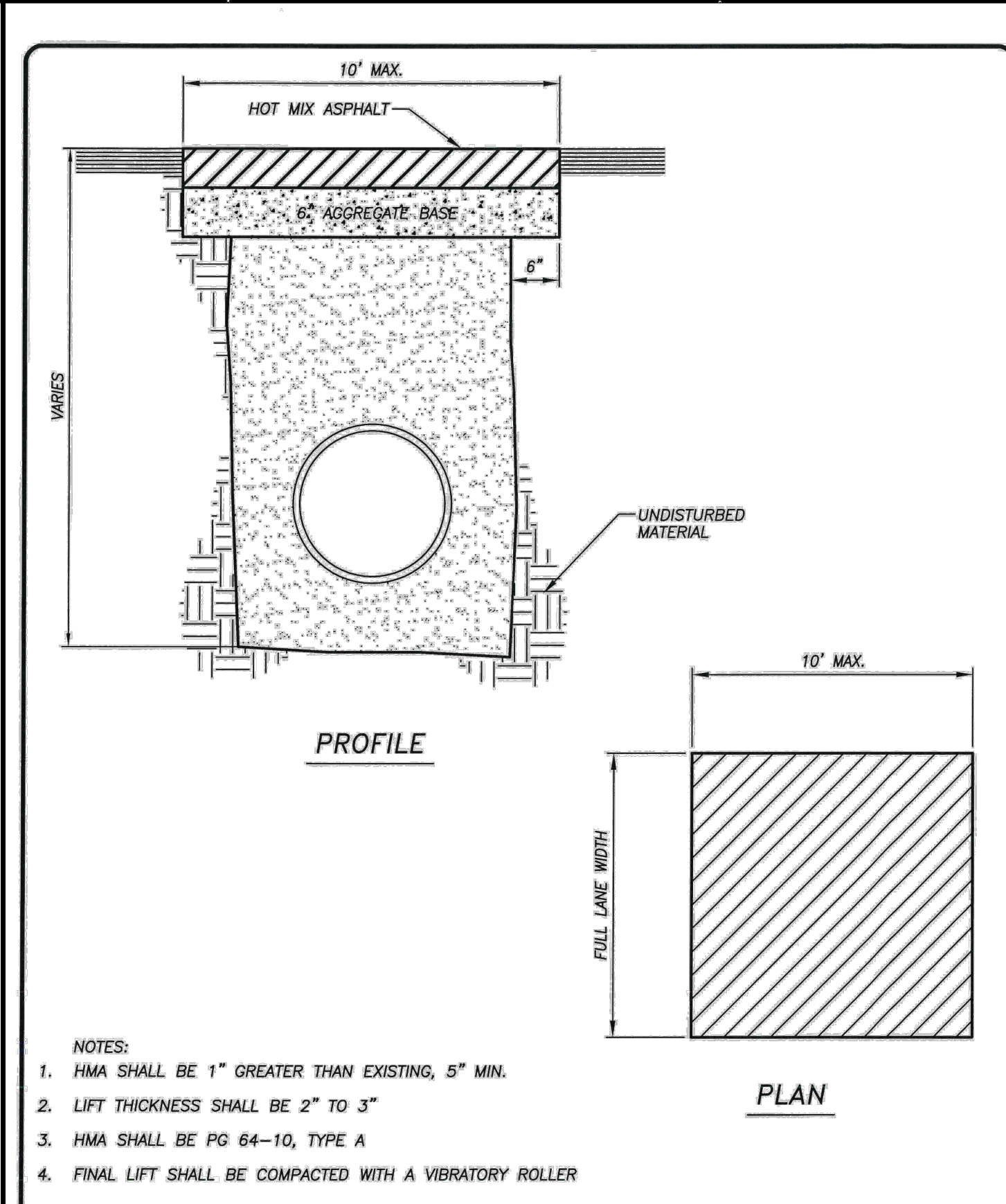
A19: See response to question 2 (Item No. 12) on Addendum No. 1. Detail 2 has been revised to exclude FDR-C from beneath the curb and gutter.

---

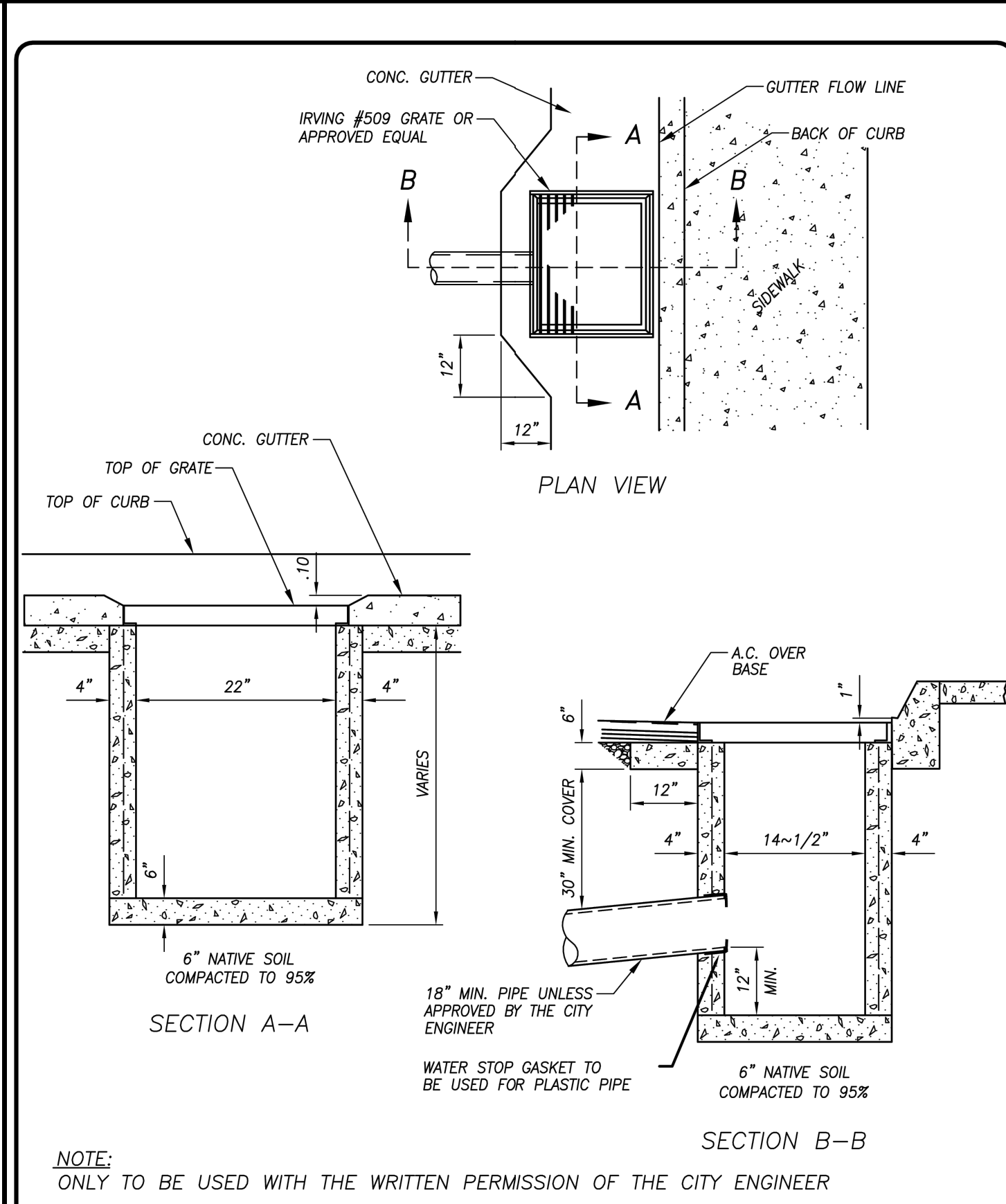
**End of Addendum No. 2**



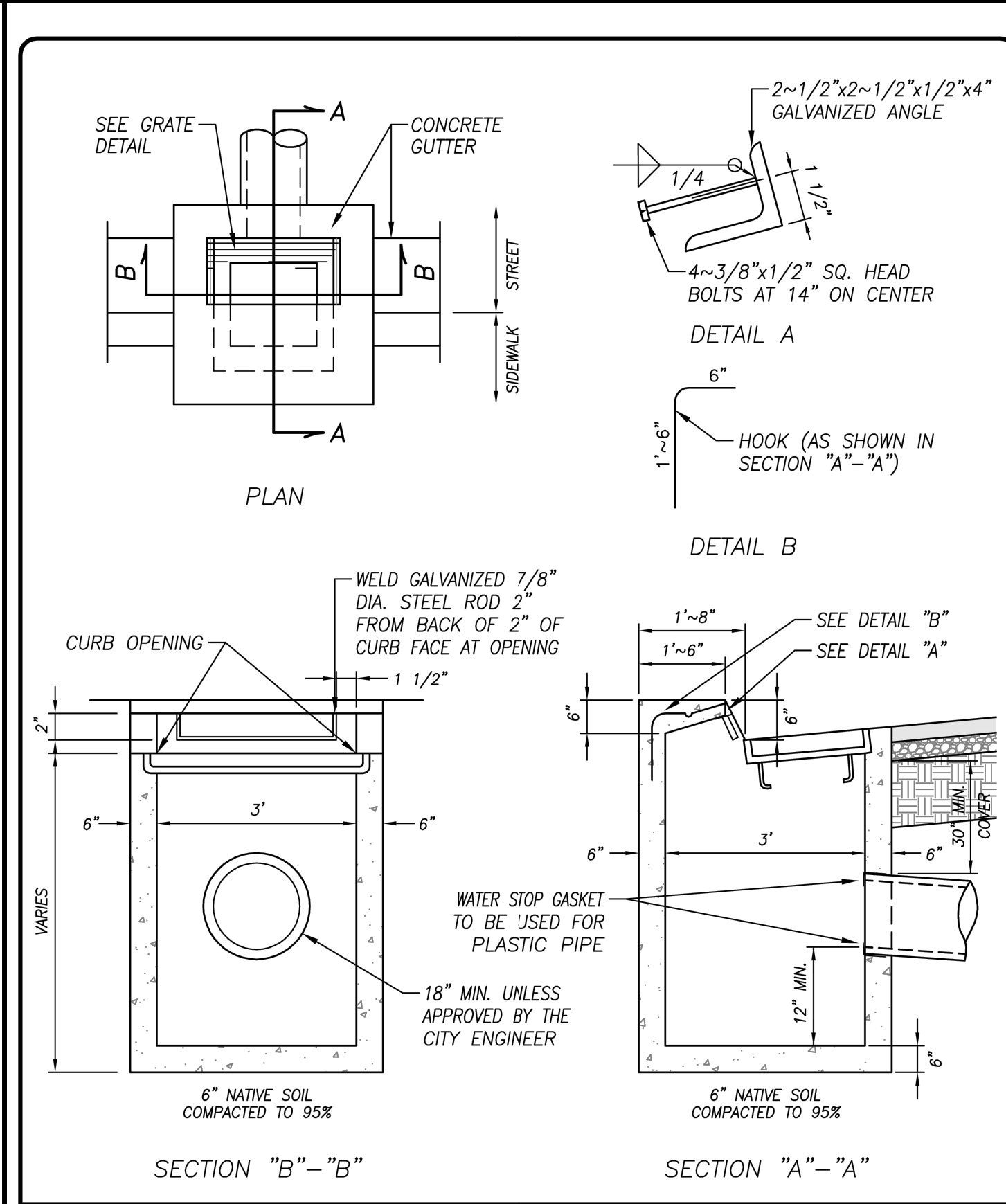
**PERPENDICULAR TRENCH PATCH LIMITS**  
 CITY OF TURLOCK  
 DRAWING NO. T-5  
 COUNCIL APPROVAL FEB, 2019  
 DRAWN BY: JSH  
 CHECK BY: NBB  
 APPROVED BY: [Signature]  
 SCALE: NONE  
 INTERIM CITY ENGINEER - NATHAN B. BRAY - RCE 76642



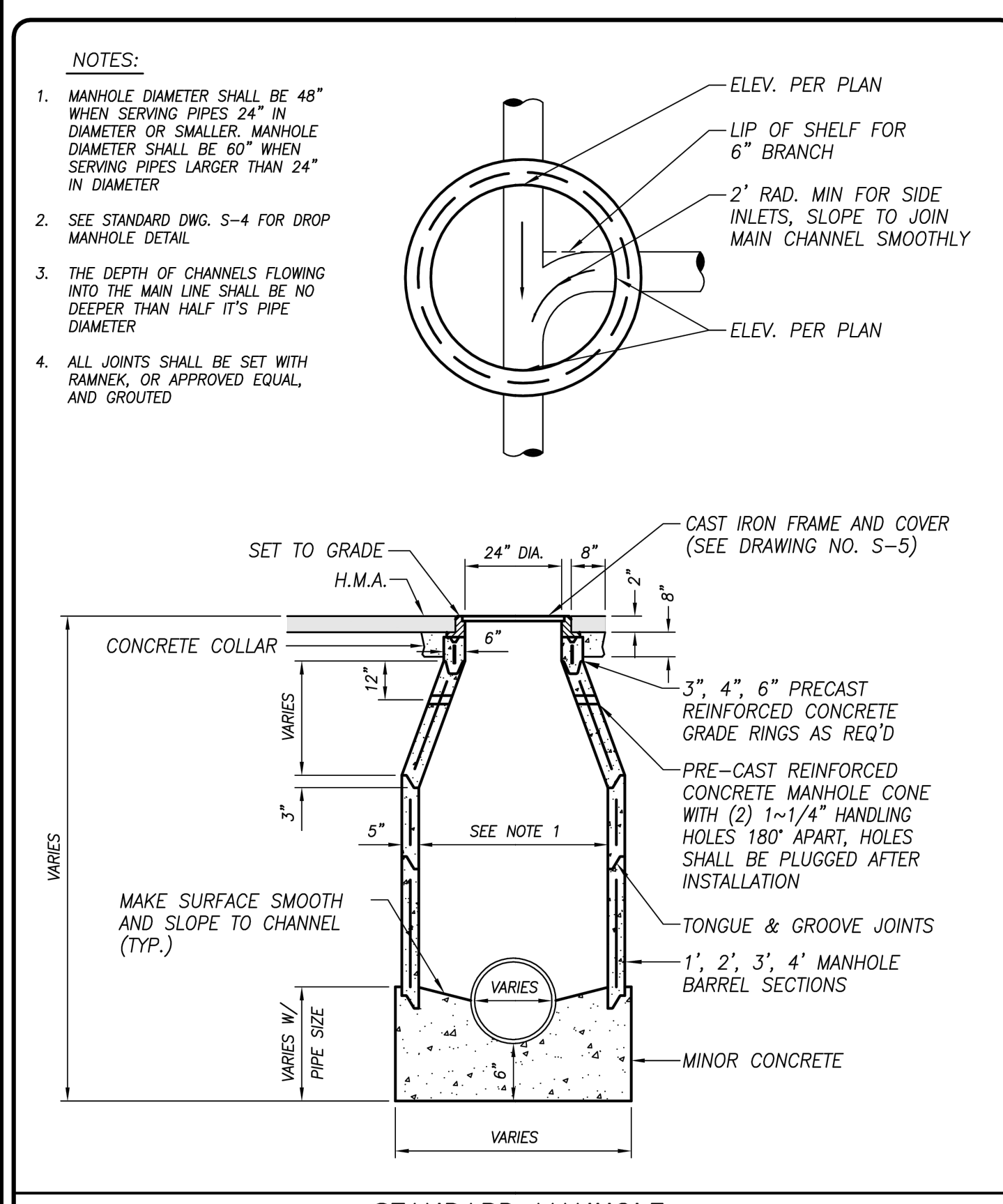
**BELL HOLE PATCH**  
 CITY OF TURLOCK  
 DRAWING NO. T-6  
 COUNCIL APPROVAL FEB, 2019  
 DRAWN BY: JSH  
 CHECK BY: NBB  
 APPROVED BY: [Signature]  
 SCALE: NONE  
 INTERIM CITY ENGINEER - NATHAN B. BRAY - RCE 76642



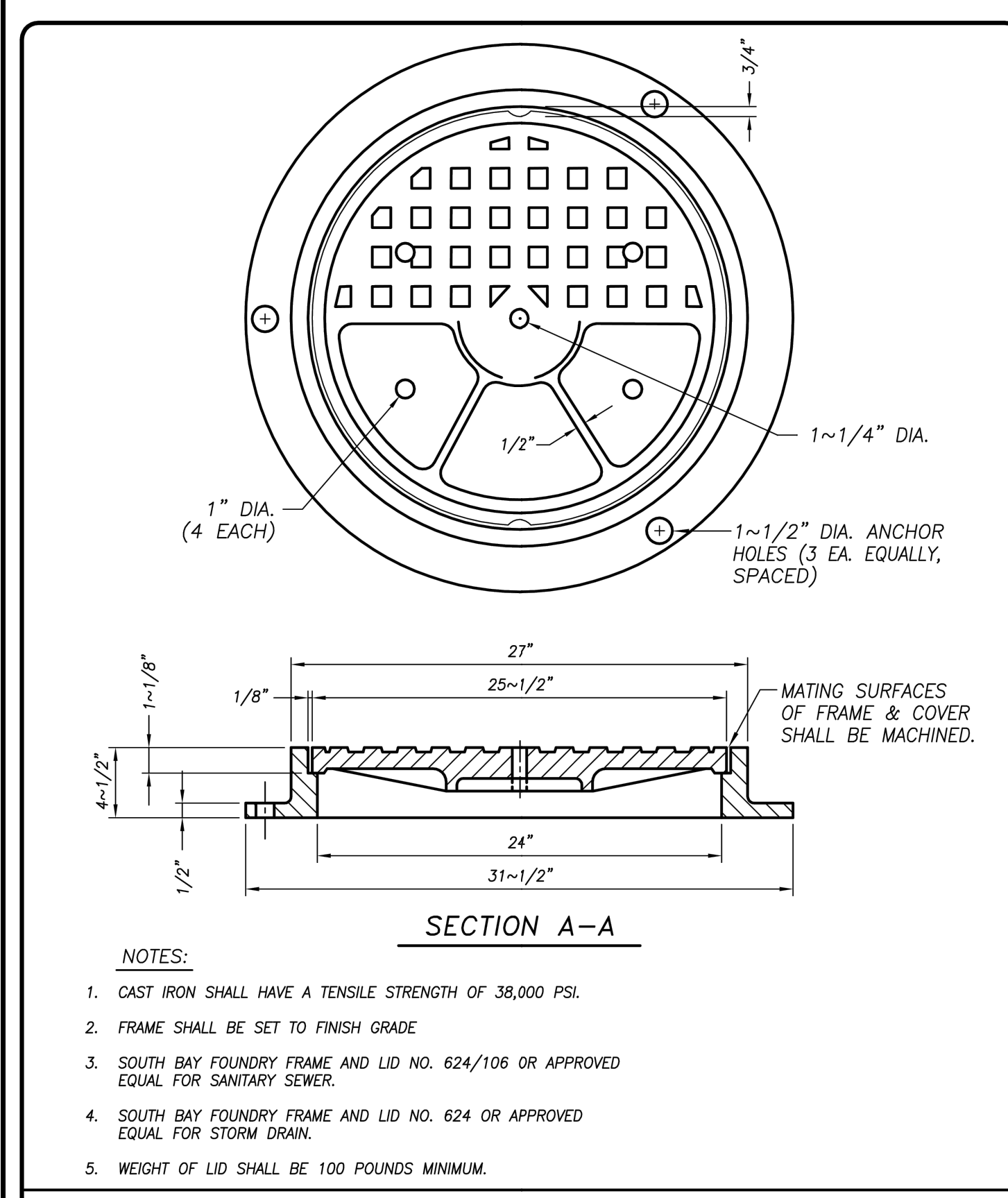
**CATCH BASIN NO. 1**  
 CITY OF TURLOCK  
 DRAWING NO. SD-1  
 COUNCIL APPROVAL DEC, 2015  
 DRAWN BY: JSH  
 CHECK BY: NBB  
 APPROVED BY: [Signature]  
 SCALE: NONE  
 CITY ENGINEER - MICHAEL G. PITCOCK - RCE 52694



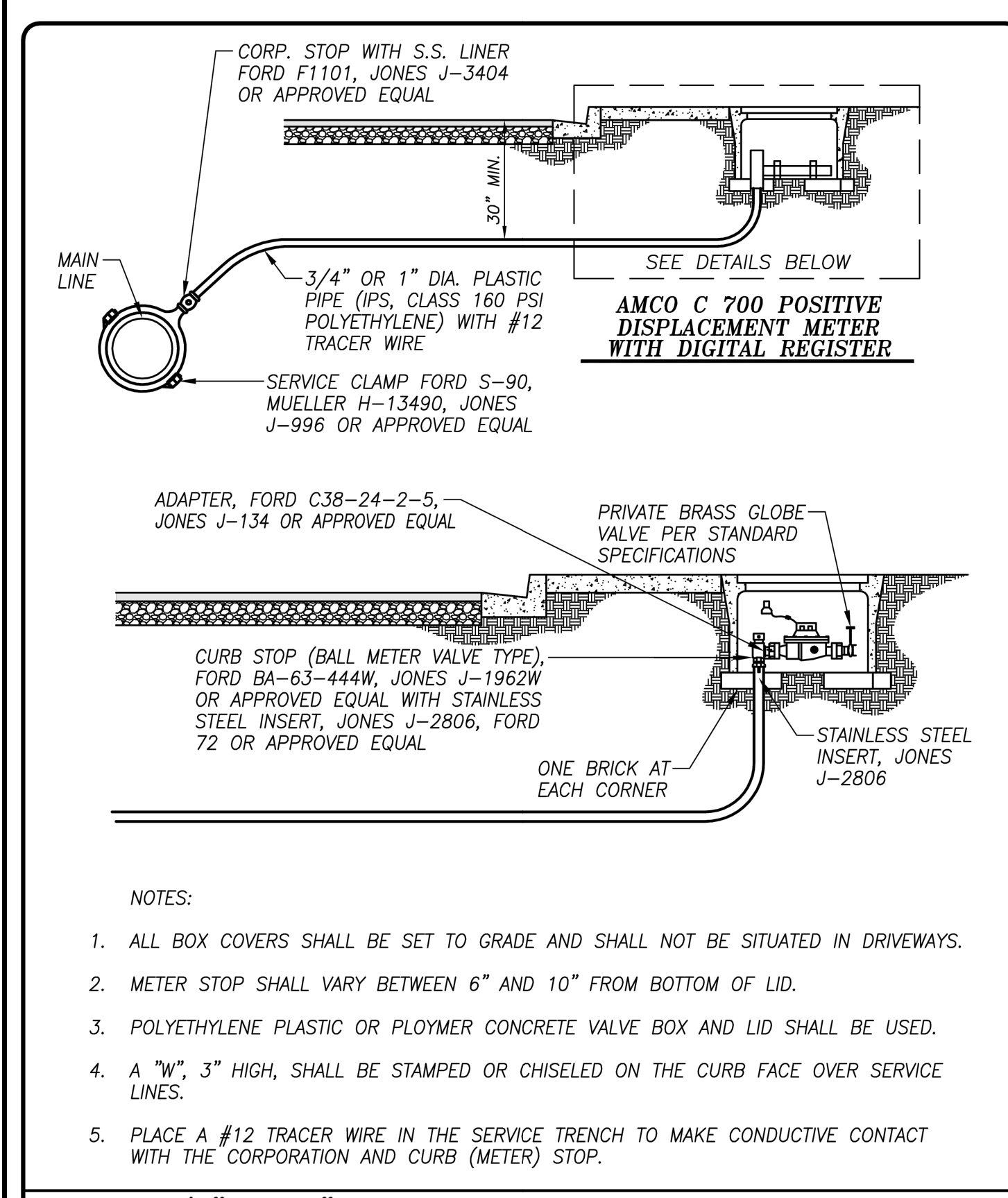
**CATCH BASIN NO. 3**  
 CITY OF TURLOCK  
 DRAWING NO. SD-3  
 COUNCIL APPROVAL NOV., 2015  
 DRAWN BY: JSH  
 CHECK BY: NBB  
 APPROVED BY: [Signature]  
 SCALE: NONE  
 CITY ENGINEER - MICHAEL G. PITCOCK - RCE 52694



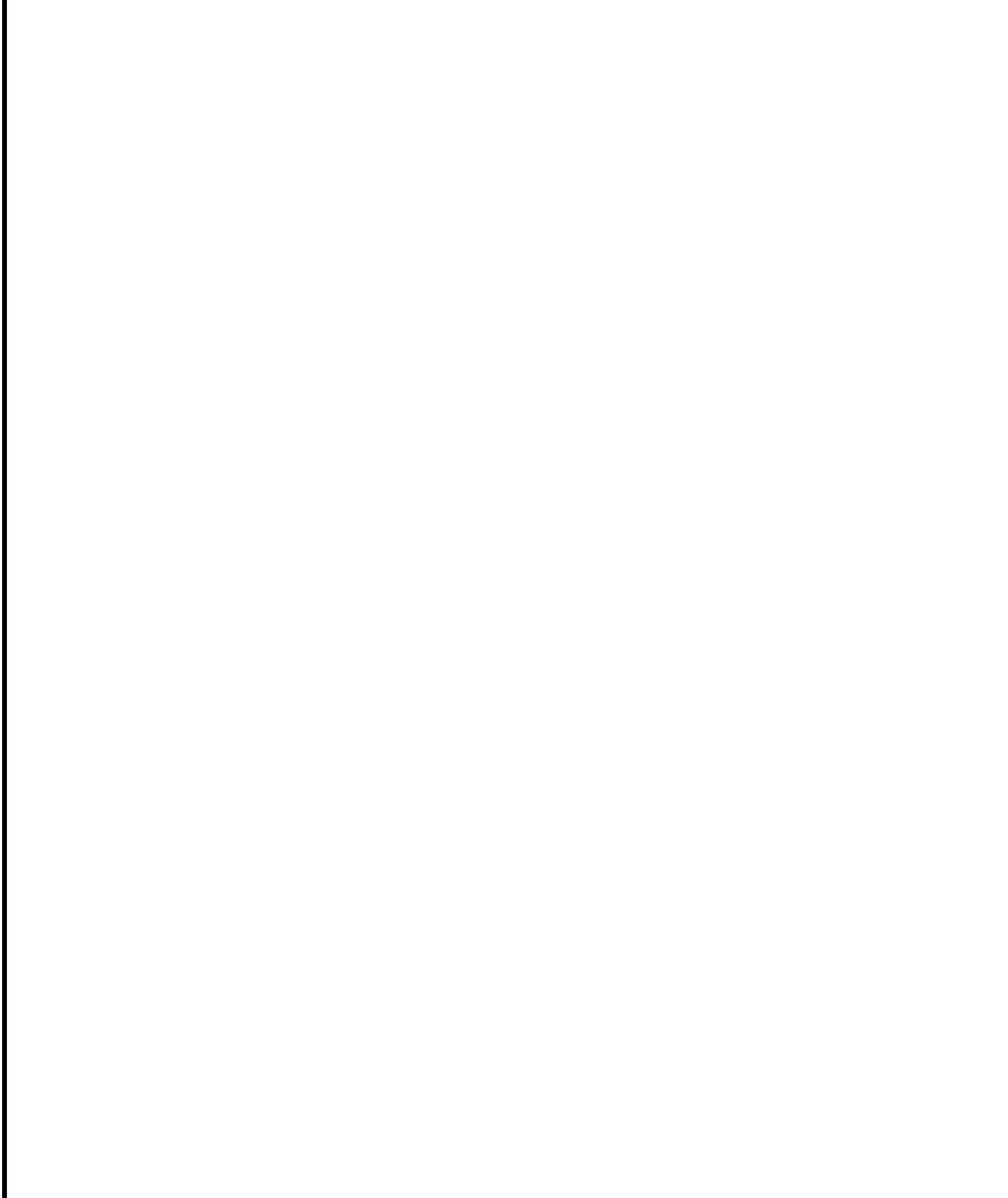
**STANDARD MANHOLE**  
 CITY OF TURLOCK  
 DRAWING NO. S-3  
 COUNCIL APPROVAL DEC, 2015  
 DRAWN BY: JSH  
 CHECK BY: NBB  
 APPROVED BY: [Signature]  
 SCALE: NONE  
 CITY ENGINEER - MICHAEL G. PITCOCK - RCE 52694



**MANHOLE FRAME AND COVER**  
 CITY OF TURLOCK  
 DRAWING NO. S-5  
 COUNCIL APPROVAL DEC, 2015  
 DRAWN BY: JSH  
 CHECK BY: NBB  
 APPROVED BY: [Signature]  
 SCALE: NONE  
 CITY ENGINEER - MICHAEL G. PITCOCK - RCE 52694



**3/4" OR 1" PLASTIC WATER SERVICE CONNECTION**  
 CITY OF TURLOCK  
 DRAWING NO. W-9  
 COUNCIL APPROVAL DEC, 2015  
 DRAWN BY: JSH  
 CHECK BY: NBB  
 APPROVED BY: [Signature]  
 SCALE: NONE  
 CITY ENGINEER - MICHAEL G. PITCOCK - RCE 52694



**STANDARD DETAILS**  
 CITY OF TURLOCK  
 DRAWING NO. S-3  
 COUNCIL APPROVAL DEC, 2015  
 DRAWN BY: JSH  
 CHECK BY: NBB  
 APPROVED BY: [Signature]  
 SCALE: NONE  
 CITY ENGINEER - MICHAEL G. PITCOCK - RCE 52694

COPYRIGHT 2022 BY PROVOST & PRITCHARD ENGINEERING, INC. ALL RIGHTS RESERVED. THIS DRAWING IS THE PROPERTY OF PROVOST & PRITCHARD ENGINEERING, INC. AND IS NOT TO BE REPRODUCED OR TRANSMITTED IN ANY FORM OR BY ANY MEANS, ELECTRONIC OR MECHANICAL, INCLUDING PHOTOCOPYING, RECORDING, OR BY ANY INFORMATION STORAGE AND RETRIEVAL SYSTEM, WITHOUT THE WRITTEN PERMISSION OF PROVOST & PRITCHARD ENGINEERING, INC. THE USER OF THIS DRAWING SHALL HOLD THE FIRM OF PROVOST & PRITCHARD ENGINEERING, INC. AND ITS ENGINEERS, ARCHITECTS, AND CONSULTANTS HARMLESS FROM AND AGAINST ALL CLAIMS, DAMAGES, LOSSES, AND EXPENSES, INCLUDING REASONABLE ATTORNEY'S FEES, ARISING OUT OF OR RESULTING FROM THE USE OF THIS DRAWING.

**APRIL 2024**

DATE SIGNED: [Signature]  
 DATE: [Blank]  
 BY: [Blank]  
 REVISION: [Blank]  
 NO.: [Blank]

CITY OF TURLOCK  
 CONSTRUCTION PLANS FOR ROADS PROGRAM  
 CAPITAL IMPROVEMENT PROJECT  
 CITY PROJECT NO. 23-032  
 DETAILS

**PROVOST & PRITCHARD**  
 465 W. FIFTH AVENUE  
 CLOVIS, CA 95319-1876  
 PHONE (530) 442-7715  
 FAX (530) 442-7715  
 WWW.PROVOSTANDPRITCHARD.COM

DESIGN ENGINEER: [Blank]  
 LICENSE NO.: [Blank]  
 DRAFTED BY: AR  
 CHECKED BY: JD  
 DATE: APRIL 2024  
 JOB NO: 229223002  
 PROJECT NO: 229223002  
 PHASE: [Blank]  
 ORIGINAL SCALE SHOWN IS ONE INCH. ADJUST SCALE FOR REDUCED OR ENLARGED PLANS.  
 SHEET **D4**  
 30 OF 78